

DINOLift
Up to the Job



SPIDER DINO®

DINO XTC II Series

- Working heights 18.5 – 22.0 m
- Excellent levelling capability
- For extreme working conditions

Spider XTC II series

Standard features in all DINO XTC II –models:

- Compact and narrow; width 1.4 m / 1.18 m
- Extremely stable to drive – long tracks; low ground pressure – low center of gravity
- Strong diesel engine, excellent gradeability 43 % (picture 1)
- Levelling to the max. inclination 16° (picture 2)
- Hydraulic basket rotation 180° (picture 3)
- Easy-entry basket (picture 4)
- Continuous rotation of the boom
- AC sockets in the basket



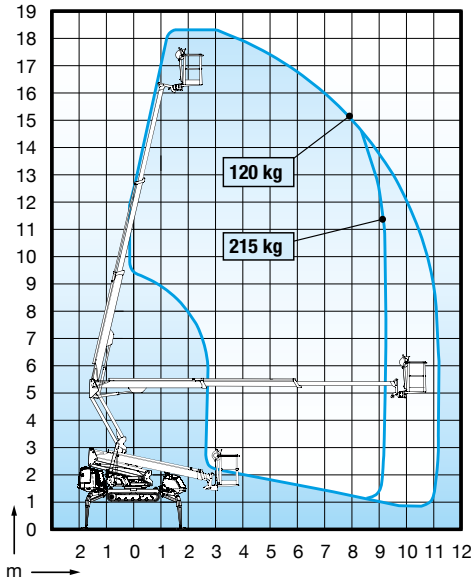
Options available for all DINO XTC II –models:

- User-friendly radio control (picture 1 and 5)
- Automatic levelling
- Electro motor 230V
- Non-marking tracks (picture 6)
- GPS telematics device
- Special colour (picture 7)
- Converter 110V
- Narrow basket 0.70 x 0.80 m
- LED working lights (picture 8)



DINO 185XTC II

Technical data

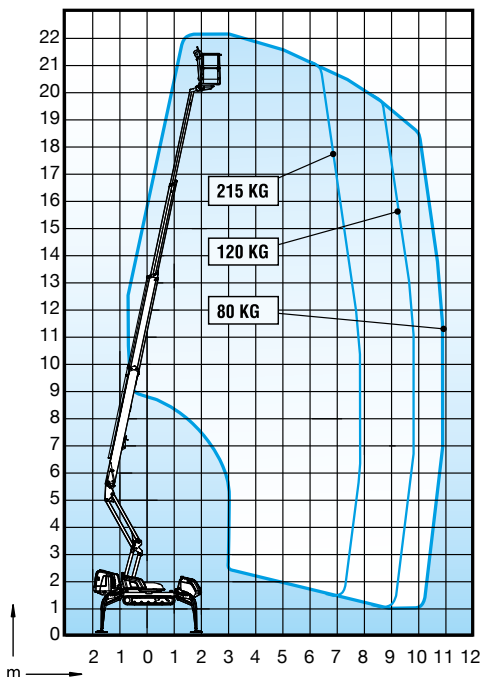


Max. working height	18.50 m
Max. platform height	16.50 m
Max. outreach	11.20 m
Support width	3.54 / 3.95 m
Lifting capacity	215 kg
Basket size	0.7 x 1.3 m
Boom rotation	cont.
Basket rotation	180°
Boom control	proport.
Transport length	5.93 m
Transport width	1.40 m / 1.18 m
Transport height	1.98 m
Weight	2860 kg
AC socket in the basket x 2	std
Diesel engine	std, Kubota 17.3 kW
Length of tracks	1.93 m
Gradeability	43 %
Max. levelling inclination	16°
Drive speed	1.4 / 2.4 km/h
Radio control	option
Automatic levelling	option
Electro motor	option



DINO 220XTC II

Technical data



Max. working height	22.10 m
Max. platform height	20.10 m
Max. outreach	11.00 m
Support width	3.54 / 3.95 m
Lifting capacity	215 kg
Basket size	0.7 x 1.3 m
Boom rotation	cont.
Basket rotation	180°
Boom control	proport.
Transport length	6.30 m
Transport width	1.40 m / 1.18 m
Transport height	1.98 m
Weight	3060 kg
AC socket in the basket x 2	std
Diesel engine	std, Kubota 17.3 kW
Length of tracks	1.93 m
Gradeability	43 %
Max. levelling inclination	16°
Drive speed	1.4 / 2.4 km/h
Radio control	option
Automatic levelling	option
Electro motor	option



DT 3500L**DT 3500L trailer**

- Weight 410 kg
- Length 6.20 m
- Width 2.07 m
- Payload 3050 kg



Up to the challenge.

DINOLIFT
Up to the Job

Dinolift Oy ist ein finnisches Unternehmen, das auf die Fertigung und Marketing hochwertiger Hubarbeitsbühnen spezialisiert ist. DINO-Hubarbeitsbühnen sind für Ihre hohe Qualität, Sicherheit und Zuverlässigkeit bekannt. Die DINO-Arbeitsbühnen werden weltweit in über 40 Ländern verkauft, 75% von der Produktion wird exportiert. Die hauptsächlichen Märkte des Unternehmens sind in Skandinavien und in Nordeuropa.

Technische Änderungen vorbehalten.



 **SCHULER & SCHULER AG**
HEBE- UND TRANSPORTTECHNIK
CH-6405 Immensee (SZ) contact@schuler-schuler.ch
Telefon +41 41 854 7000 Telefax +41 41 854 7001
www.schuler-schuler.ch